

REPORT OF THE COMMUNITY HEALTH OUTREACH CARRIED OUT BY THE AFRICAN CENTRE OF EXCELLENCE IN PUBLIC HEALTH AND TOXICOLOGICAL RESEARCH (ACE-PUTOR) IN PARTNERSHIP WITH THE DEPARTMENT OF COMMUNITY MEDICINE, UPTH AND THE MEDICAL WOMEN ASSOCIATION OF NIGERIA (MWAN), RIVERS STATE BRANCH WHICH HELD ON THE 16TH AND 17TH FEBRUARY, 2022 AT THE ALUU PRIMARY HEALTH CARE CENTRE

INTRODUCTION

Primary Health Care is critical for community members' health, as it ensures that individuals and groups receive all of the treatment they require within their community. In a bid to bring healthcare closer to the people, a two-day health outreach was planned for the three host communities of the Primary Health Center Aluu which are Omuoko, Umuhechi and Omuokiri. This health outreach was held on the 16th and 17th of February, 2022 in the premises of the health centre.

PRELIMINARY ACTIVITIES

Planning for the health outreach involved the following activities:

- Preparation of a budget for the 2 day outreach
- Sending of letters to the paramount rulers of the 3 host communities
- Sending of letters to churches of the host communities to intimate them of the outreach
- Liaising with other stakeholders – MWAN Rivers, Department of Community Medicine, UPTH, Community Health Officers Programme to understand roles and responsibilities of each stakeholder
- Leveraging on the Community Health Officers Programme on health assessment in the host communities to aid publicity
- Request for more personnel from the haematology department and community medicine departments to support the outreach
- Assessment of the needs of the health centre for possible intervention

OUTREACH ACTIVITIES

The outreach took place on the 16th and 17th of February 2022 at the Primary Health Centre in Aluu. Prof. Daprim Ogaji, the ACE-PUTOR centre leader, did the flag off, declaring it open in the presence of ACE-PUTOR personnel, PHC Aluu staff, MWAN Rivers Representatives, and community leaders.



Figure 1: ACE-PUTOR Centre Leader (3rd from Left) with Community Leader (2nd from Left)



Figure 2: ACE-PUTOR center leader declaring the outreach open

The outreach had the following services:

1. Health talks
2. Free medical care/health screening
3. Laboratory tests
4. Eye/Ear checks
5. Free cervical cancer screening
6. COVID vaccination services
7. Family planning services

OUTREACH STATISTICS

340 community members were seen during the outreach. 113 for Day 1 and 227 for Day 2.

Common ailments seen for adults were malaria/plasmodiasis and chronic conditions such as hypertension and joint pains, while that for children was mainly upper respiratory tract infection characterized by common complaints of cough and catarrh.

Table 1: Table showing the statistics for the two-day outreach

	DAY 1	DAY 2	TOTAL
SEX			
MALE	31	71	102
FEMALE	82	156	238
AGE			
ADULTS (>18 Years)	80	123	203
CHILDREN (<18 Years)	33	104	137
FAMILY PLANNING SERVICES	8	16	24
COVID-19 VACCINES			
- 1 st Dose	6	15	21

- 2 nd Dose	7	10	17
LABORATORY SCREENING			
- Total HIV Screening done	101	132	233
- Total number of HIV positives*	6	5	11
<i>*Positives were referred for continuation of care</i>			
- Total Malaria RDT test done	50	49	99
- Total Malaria RDT positives	3	16	19
CERVICAL CANCER SCREENING			
- Total women screened	12	23	35
- Suspicious lesions found*	4	1	5
<i>*Women with suspicious findings were referred for PAP smear</i>			

CONCLUSION

The outreach was a huge success and was able to hold because of the support gotten from ACE-PUTOR, MWAN Rivers, Department of Community Medicine, UPTH and the host communities. Various health services were provided for the 340 community members seen during the outreach. Our sincere appreciation goes to all partners for their support and especially the centre leader ACE-PUTOR and consultant-in-charge, PHC Aluu - Prof. Ogaji for showing tremendous leadership in making this outreach a huge success.



Dr. Abiye Somiari

Supervising Senior Registrar (Jan/Feb)

Aluu PHC

PICTURES



Figure 3: Doctor attending to clients



Figure 4: Laboratory tests for clients



Figure 5: Ear syringing being done for a patient



Figure 6: Eye examination for a client



Figure 7: Breast Examination by MWAN

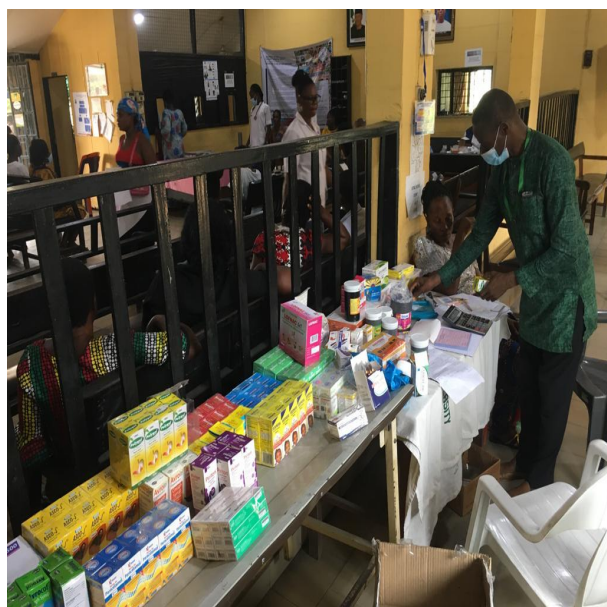


Figure 8: Drugs being displayed at the outreach



Figure 9: Clients for the health outreach



Figure 10: Family planning counselling ongoing



Figure 11: ACE-PUTOR leader with members of staff of PHC Aluu